



# BROXBURN ACADEMY - Our Learning Online

January 2021

Welcome back to Broxburn Academy for 2021! We may be learning with most of you remotely, but we are very much looking forward to engaging with you online over the next few weeks and look forward to welcoming you all back into the building as soon as possible.

Hopefully you will find everything that you need in this information pack. However, if there is anything that you are unsure of, or don't know, please get in touch using the school office email below and we will get back to you as soon as we possibly can either by email or telephone call:

[wbroxburn-ac@westlothian.org.uk](mailto:wbroxburn-ac@westlothian.org.uk)

## Learning Online

We've all had experience of learning online previously, and your skills and abilities in engaging with this will have improved greatly over the last wee while, and so have ours! We are all continuing to build our knowledge and capabilities to bring to you the best online learning possible. As we progress, we will seek your views on your online learning experience, however, feel free to let us know any feedback.

## Broad General Education

If you are in S1 – S3 you will be following a 'Block' Timetable over the Remote Learning period, please see below for the timetable specific to your year group. There are 3 blocks per day, the first generally being a slightly longer session, with a break from 11.15 am to 11.30 am and lunch built in from 1.10 pm to 1.50 pm. You will learn in a variety of different ways throughout the week, examples of these could be; live lessons, pre-recorded lessons, tasks and projects, 'drop ins' and independent learning activities. There will be times where you will have to undertake learning at the 'block' times, however, there may be activities that can be undertaken at alternative times that suit you and can be submitted by a specific deadline. Please make sure that you meet your deadlines as your teachers will be using this as one way of reviewing your engagement in learning.

### S1 Remote Block Timetable

| 8.45 - 11.15 | 11.30 - 1.10 | 1.50 - 3.30 | 8.45 - 10.25 | 10.40 - 1.10 | 1.50 - 3.30 | 8.45 - 11.15 | 11.30 - 1.10 | 1.50 - 3.30     | 8.45 - 11.15 | 11.30 - 1.10 | 1.50 - 3.30 | 8.45 - 10.25 | 10.40 - 12.20 |
|--------------|--------------|-------------|--------------|--------------|-------------|--------------|--------------|-----------------|--------------|--------------|-------------|--------------|---------------|
| S1           |              |             |              |              |             |              |              |                 |              |              |             |              |               |
| MONDAY       |              |             | TUESDAY      |              |             | WEDNESDAY    |              |                 | THURSDAY     |              |             | FRIDAY       |               |
| 1            | 2            | 3           | 1            | 2            | 3           | 1            | 2            | 3               | 1            | 2            | 3           | 1            | 2             |
| Maths        | PSE/CMS      | English     | PE/HWB       | Mod Lang     | Music       | Science      | Soc & RME    | Art. DMG, Drama | English      | Soc & RME    | HE          | Bus / ICT    | Maths         |

\*to note, Tues block 1 & 2 have slightly different times to Monday, Wednesday and Thursday

### S2 Remote Block Timetable

| 8.45 - 11.15 | 11.30 - 1.10                | 1.50 - 3.30 | 8.45 - 11.15 | 11.30 - 1.10 | 1.50 - 3.30 | 8.45 - 10.25 | 10.40 - 1.10 | 1.50 - 3.30 | 8.45 - 10.25 | 10.40 - 1.10 | 1.50 - 3.30 | 8.45 - 10.25 | 10.40 - 12.20               |
|--------------|-----------------------------|-------------|--------------|--------------|-------------|--------------|--------------|-------------|--------------|--------------|-------------|--------------|-----------------------------|
| S2           |                             |             |              |              |             |              |              |             |              |              |             |              |                             |
| MONDAY       |                             |             | TUESDAY      |              |             | WEDNESDAY    |              |             | THURSDAY     |              |             | FRIDAY       |                             |
| 1            | 2                           | 3           | 1            | 2            | 3           | 1            | 2            | 3           | 1            | 2            | 3           | 1            | 2                           |
| Mod Lang     | Art. DMG, Dra, Mus, HE, Bus | Science     | English      | Soc/RME      | PE/HWB      | English      | Maths        | Mod Lang    | Soc/RME      | Maths        | CMS/PSE     | Science      | Art. DMG, Dra, Mus, HE, Bus |

\*to note, Wednesday and Thursday's block 1 & 2 have slightly different times to Monday and Tuesday

### S3 Remote Block Timetable

| 8.45 - 11.15 | 11.30 - 1.10 | 1.50 - 3.30                 | 8.45 - 11.15                | 11.30 - 1.10 | 1.50 - 3.30 | 8.45 - 11.15 | 11.30 - 1.10 | 1.50 - 3.30 | 8.45 - 11.15 | 11.30 - 1.10 | 1.50 - 3.30 | 8.45 - 10.25 | 10.40 - 12.20 |
|--------------|--------------|-----------------------------|-----------------------------|--------------|-------------|--------------|--------------|-------------|--------------|--------------|-------------|--------------|---------------|
| S3           |              |                             |                             |              |             |              |              |             |              |              |             |              |               |
| MONDAY       |              |                             | TUESDAY                     |              |             | WEDNESDAY    |              |             | THURSDAY     |              |             | FRIDAY       |               |
| 1            | 2            | 3                           | 1                           | 2            | 3           | 1            | 2            | 3           | 1            | 2            | 3           | 1            | 2             |
| Science      | Social Subs  | Art. DMG, Dra, Mus, HE, Bus | Art. DMG, Dra, Mus, HE, Bus | Maths        | English     | Soc / RME    | PSE/CMS      | Science     | PE/HWB       | Mod Lang     | Maths       | English      | Mod Lang      |

## Areas to note within the BGE Block Timetable

### Modern Languages

You will work on your specific languages at the times shown below:

|           |                            |
|-----------|----------------------------|
| <b>S1</b> |                            |
| French    | Tuesday, 10.40 am – 12 pm  |
| Spanish   | Tuesday, 12pm – 1.10 pm    |
| <b>S2</b> |                            |
| French    | Monday, 8.45am – 11.15am   |
| Spanish   | Wednesday, 1.50pm – 3.30pm |
| <b>S3</b> |                            |
| French    | Thursday, 11.30am – 1.10pm |
| Spanish   | Friday, 10.40am – 12.20pm  |

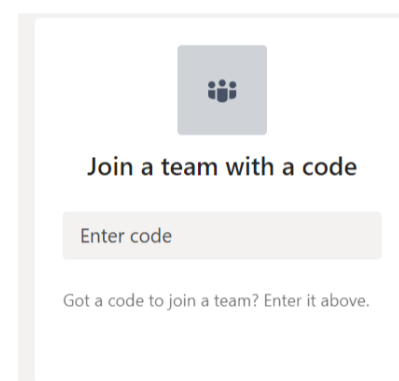
### Career Management Skills (CMS)

Your work for Career Management Skills will be posted onto your class Team on a Monday with a deadline of Friday. This will allow you to complete your learning within the allotted CMS time, or at a time of your choosing. If you have questions related to your learning you can post them during the week. However, please turn in your work on, or before, the specified deadline as your class teacher will be reviewing your engagement in the learning.

### DMG

Please access the following Team for your year group using the codes highlighted below.

| Class                               | Code           |
|-------------------------------------|----------------|
| <b>1<sup>st</sup> Year</b>          | <b>fssxoj3</b> |
| <b>2<sup>nd</sup> Year</b>          | <b>jbm3yk6</b> |
| <b>3<sup>rd</sup> year PWW</b>      | <b>q935jv7</b> |
| <b>3<sup>rd</sup> year Graphics</b> | <b>1w1pk50</b> |



### S2 / S3 Dance Elective

You should use your **PE/HWB time** to undertake your Dance elective with your teacher and using your already established teams and channels.

## Senior Phase

If you are in S4, S5, or S6 you will be following your normal timetable. Your break will be at 11.15 am – 11.30 am and lunch will be 1.10 pm – 1.50 pm. You will learn in a variety of different ways throughout the week, examples of these could be; live lessons, pre-recorded lessons, tutorials, team learning, assignments, 'drop ins' and independent learning activities. We understand that you may want to complete, for example, independent learning activities and assignments, outside the school day as this will suit your learning better. However, please make sure that you meet all of your deadlines and are attending lessons, as your teachers will be reviewing your engagement in learning and gathering evidence of your work as part of your Learner Evidence Journey.

## Areas to note within the Senior Phase

### Core RMPS

Core RMPS will post work on a Monday for completion at a time of your choosing - during your timetables slot or a time that suits you. However, please 'turn in' work by the end of the school week. You can post any questions you have through the week and your teacher will get back to you as soon as possible.

### DMG

If you are undertaking Practical Woodwork in S4 please use the Code below to access the PWW Team.

| Class                    | Code    |
|--------------------------|---------|
| 4 <sup>th</sup> year PWW | 5o4pr0y |

## Organised for learning!

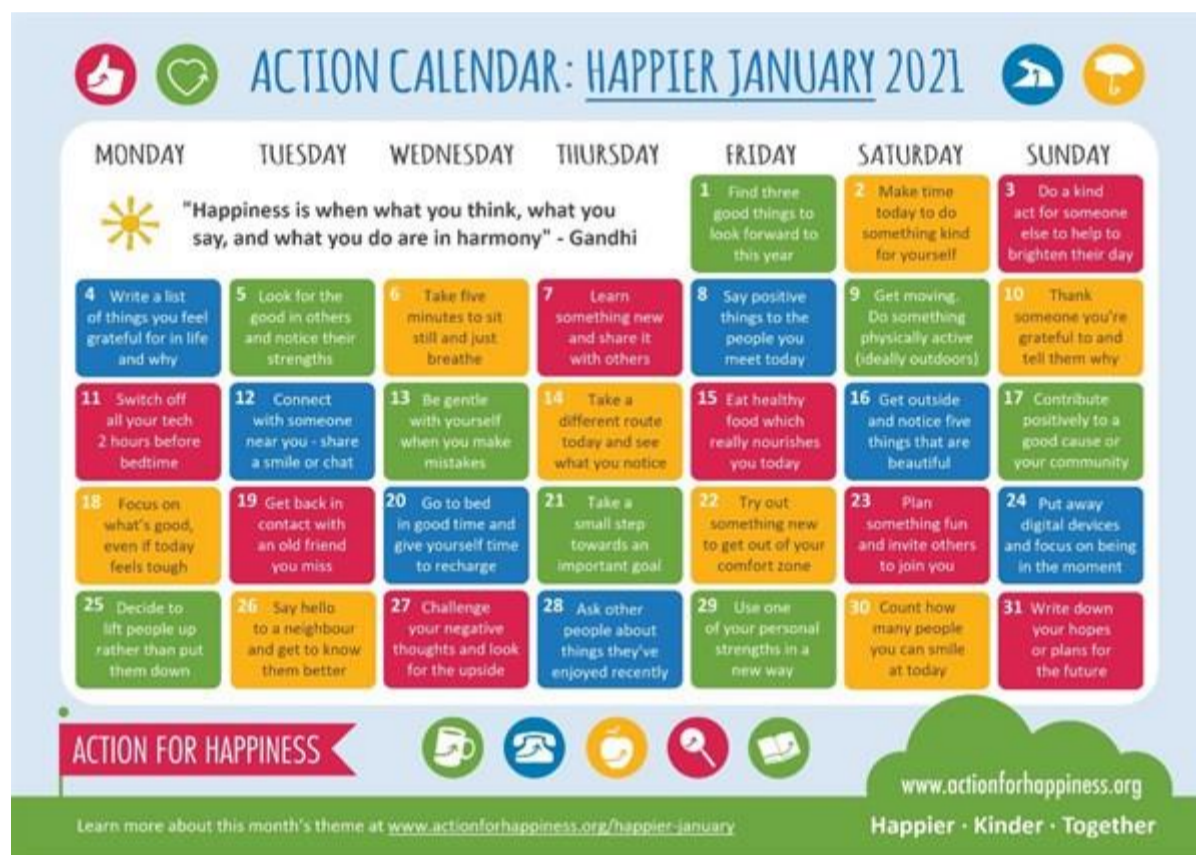
If for some reason you do not have your Glow password and can't access Teams you can get in touch with us and we will talk you through resetting this. Parents must not access a young person's GLOW account under any circumstances, this is personal to them only.

## Health and Wellbeing

Lockdown can be very challenging so remember to look after your health and wellbeing as well as working hard. While you're expected to fully engage in your learning you are not expected to be online all of the time. Take regular breaks, get some exercise, and have healthy snacks and hydrate, drinking plenty of water.

If you are in the BGE your PE teacher will post regular activities giving opportunities for exercise within, and out with, your block timetable times. In the Senior Phase make sure you take advantage of your Core PE time to exercise or undertake relaxation. Joe Wicks will take up 'PE with Joe' again on his YouTube channel on a Monday, Wednesday and Friday at 9am, you can also find lots of other exercise programs on his YouTube channel.

Below is January's Action for Happiness calendar, you can access these here <https://www.actionforhappiness.org/>



## Attendance

If you are unwell and are unable to home learn on a given day please contact the school and we will update your attendance. If you are likely to be unwell for more than one day please let the school know this and they will update as appropriate.

## Some examples of previous online learning



We look forward to seeing future examples of your work and sharing these with you. Remember, we are always happy to help so don't hesitate to get in touch with us. We will give regular updates as we progress through our online learning.

Best wishes to you and your family,

The staff of Broxburn Academy